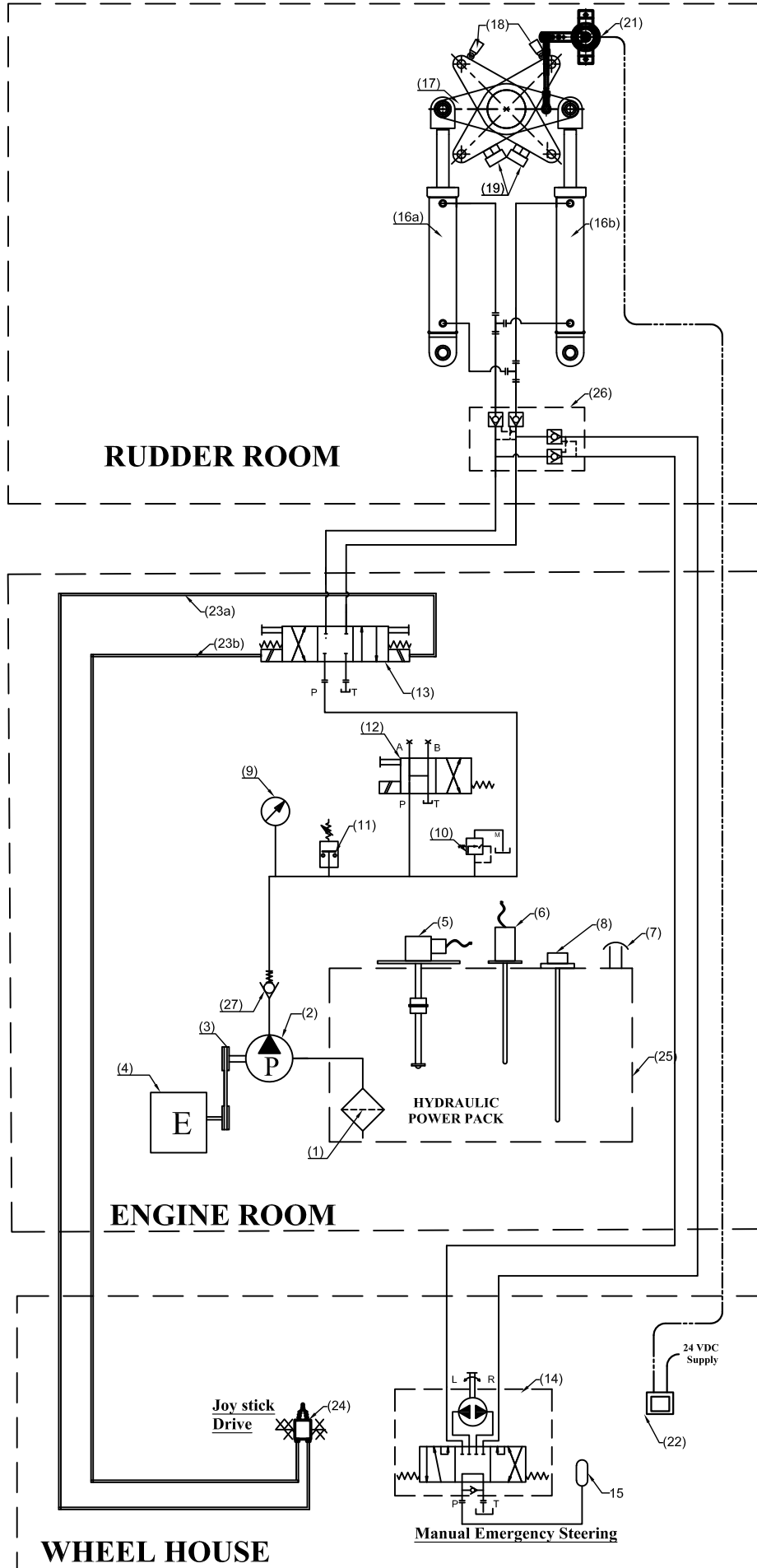


Electro-Hyd. Circuit - JumboZ-500E PTO with Joystick Control-Emergency



SI No.	Description
1	Suction Strainer
2	Hydraulic pump
3	PTO Pulley
4	Engine
5	Oil Level Sensor
6	Oil Temp. Sensor
7	Filler Breather
8	Oil Dip Stick
9	Pressure Gauge
10	Pr. Relief Valve
11	Pre. Switch. Low Pre. Alarm
12	Unloading Valve
13	Sol. Opertd. Dire. Control Valve
14	Emergency Steering
15	Flanged Reservoir
16a,16b	Hyd. Actuator - JumboZ 500
17	Tiller Arm
18	Limit Switch
19	Mechanical Stopper- (Yard Supply)
20	Oil Reservoir
21	Rudder Angle Sensor
22	Rudder Angle Indicator Elec. Lines to Sol. Opertd. Valve
23a,23b	Valve
24	Joystick
25	Power pack Tank
26	Double Check Valve
27	Non-Return Valve



**MAC ♦ N ♦ HOM SYSTEMS
KOCHI - 20**

DESIGNATION

Electro-Hydro. Circuit of JumboZ-500E
PTO -Joystick -Emergency

DWG. No.

MHS-1827

DATE

24.03.2023

A

B

C

D

E

F

G

H